

VAN CAM INSTALLATION INSTRUCTIONS



Tools Required:

Phillips Screwdriver
Standard Drill
3/8" drill bit
T-taps or Equiv.
Wire Strippers or
Crimpers

VAN CAM INSTALLATION INSTRUCTIONS



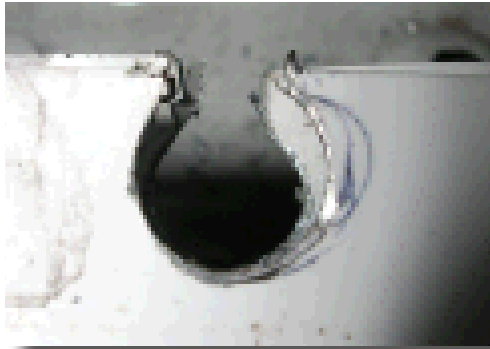
Remove 2 screws securing the brake-light



Pull Brake-light away from opening



Drill a 3/8" hole just below the opening, making sure to pierce the edge.



...to allow insertion of the camera cable



Remove camera from bracket and hook bracket onto drip rail



Drill a small pilot hole for tamper-resistant screw



Using included bit, insert tamper-resistant screw. Do not overtighten.



Place a piece of self-stick seal to either side of camera cable



Run camera cable into vehicle and mount control unit inside.

VAN CAM INSTALLATION INSTRUCTIONS



Make electrical connections. Reverse wire is +12V when vehicle is in reverse. Usually Black/Pink in the driver's kick-panel.



Affix cover with included cover screw and replace brake light

Mobile Installation Service Available for All
Southern California Areas

Our Installation Team will come to your Home or Office
7 Days a Week

Call to Schedule Today! 877-700-4883